



35 The Street

Wrecclesham, Farnham, GU10 4QS

An attractive staggered terrace house offering lots of character and potential to modernise. The property has 2 good sized reception rooms, spacious entrance hall, 4 good bedrooms, garden and double garage. Grange Cottage is situated close to local shops, public houses, Weydon school and the recreation ground. No onward chain.

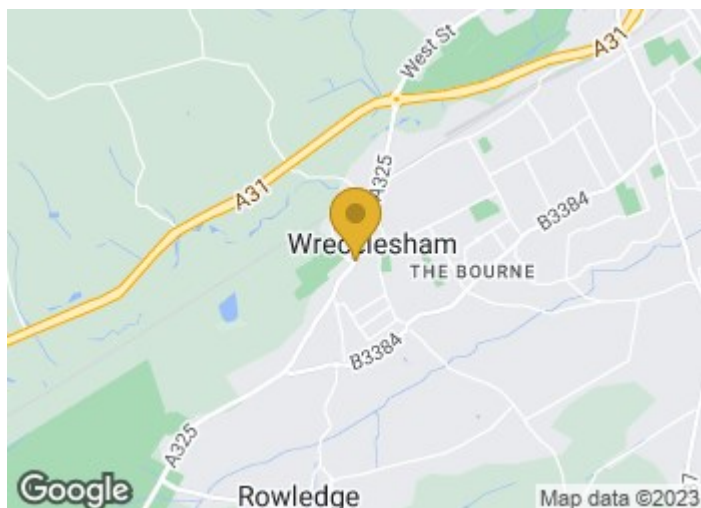
Price Guide £575,000

35 The Street

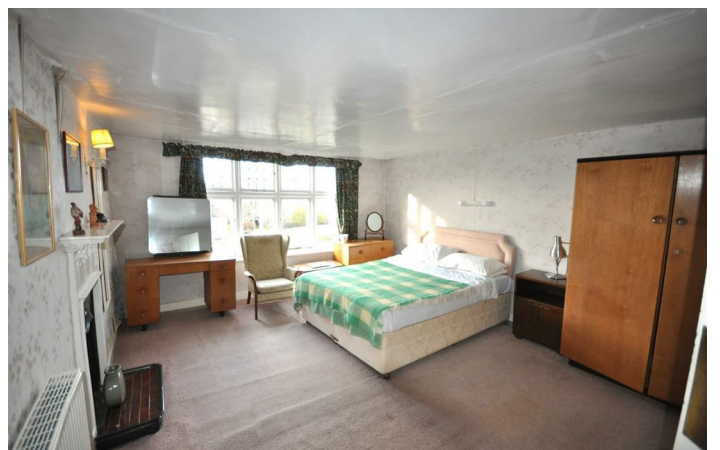
Wrecclesham, Farnham, GU10 4QS



- Reception hall
- Kitchen
- Shower room
- In need of modernisation
- Sitting room
- Utility room and cloakroom
- Double garage
- Dining room
- 4 bedrooms
- Front and rear garden



[Directions](#)



Floor Plan



TOTAL FLOOR AREA: 2062 sq.ft. (191.6 sq.m.) approx.

Whilst every attempt has been made to ensure the accuracy of the floorplan contained here, measurements of doors, windows, rooms and any other items are approximate and no responsibility is taken for any error, omission or mis-statement. This plan is for illustrative purposes only and should be used as such by any prospective purchaser. The services, systems and appliances shown have not been tested and no guarantee as to their operability or efficiency can be given.
 Made with Metropix ©2023



These particulars, whilst believed to be accurate are set out as a general outline only for guidance and do not constitute any part of an offer or contract. Intending purchasers should not rely on them as statements of representation of fact, but must satisfy themselves by inspection or otherwise as to their accuracy. No person in this firm's employment has the authority to make or give any representation or warranty in respect of the property.

